

## Compression Type



### HLF01 - compression type load cell

The HLF01 is a load cell of the compression (membrane) type, used in the construction of silo, truck, and rail scales, as well as other dosing and weighing systems where traditional load cells cannot be installed due to limited installation space.

Thanks to its compact dimensions and low profile, the HLF01 is ideal for applications requiring reliable and space-efficient solutions. Despite its small size, it offers excellent metrological performance and high reliability in industrial environments.

The load cell body is made of nickel-plated alloy steel, with silicon sealing that ensures dust and moisture protection IP67. The design allows for quick and stable installation.

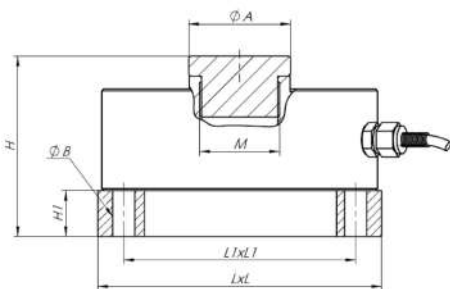
#### Key features:

- Capacity range: 0.5 t to 60 t
- Material: Nickel-plated alloy steel
- Protection class: IP67

## Specification

Rated load (E <sub>max</sub> )	10, 20, 25, 30, 40, 50, 60t	Insulation resistance	≥5000MΩ
Sensitivity	2.0±0.006 % mV/V	Operating Temp Range	(-30 ~ +70)°C
Combined error	±0.02 % F.S; ±0.03 % F.S	Safe load limit	150 % F.S
Creep/30min	±0.02 % F.S/30min	Ultimate overload	200 % F.S
Zero balance	±1 % F.S	Recommend excitation	10 ~ 12V DC
TCO	±0.02 % F.S/10°C	Max excitation	15V DC
TC SPAN	±0.02 % F.S/10°C	Protection Class	IP67
Input resistance	775±10Ω	Material	Alloy steel Stainless steel
Output resistance	702±3Ω	Cable	Length: 10m Diameter: ø6mm

## Main Dimensions



(t) Rated load	H	H1	øA	øB	L	L1	M
0.5~3	62.8	18	ø32	ø11	130	103.8	M16x1.5
5~10	84.8	23	ø42	ø11	120.7	98.8	M32x1.5
15~30	90.2	23	ø51	ø11	142	116	M40x1.5
40~60	102	23	ø67.5	ø13	180	147.1	M32x1.5

